

## Evergreen Park Site Visit Memo

Site visit took place over two days in August 2020.

Conditions were hot and humid following a couple days of heavy rain.

### Assessment-Observations

- Evergreen Park is a traditional park with a loop road leading to shelters, playgrounds, restrooms, and parking.
- Signage is limited to entry feature, loop road navigation, shelters, parking, and winter trails (snowshoe and XC ski). Winter trail signage does not seem to be complete or is in disrepair.

#### Shared Use Trails

- No shared use trail signage or bike trail specific signage.
- A preferred MTB route is not identifiable Shared use trails are traditional singletrack network throughout the park. Spiderweb of trails making it confusing to navigate.
- Trails look to have evolved organically over the years.
- Many “social” lines and options have developed.
- Singular experience of initially narrow tread, natural, roots, disjointed flow.
- Bridge structures spanning drainages are in disrepair.

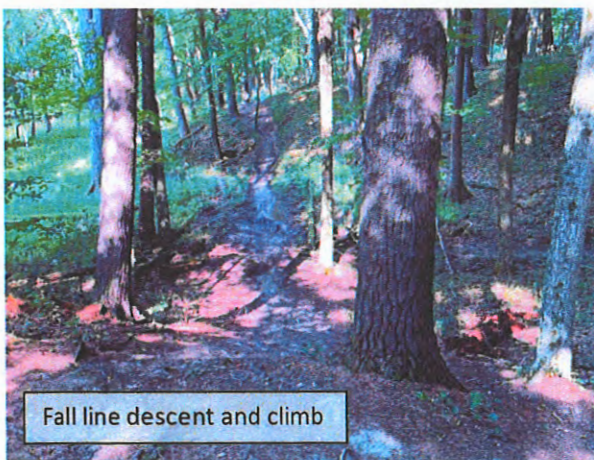
*Note, a first-time visitor MTB rider came out of the woods not knowing where he was and talked about how difficult it was to navigate the trails without the reassurance of signage and wayfinding. Mentioned he usually rides around Cable and Kettle Moraine.*

#### Trail Conditions

- Trail tread is cupped throughout the system.
- Lack of drainage management.
- Tread creep and widening throughout the park.
- “Social lines” created when trails fail.
- Fall line trails are present when slopes gain grade.
- Trails that set in low lying wet areas are likely unrideable most of the year, especially in the spring.
- Lack of modern bike-optimization.







Evergreen Park Site Visit Memo – October 15, 2020





## Recommendations and Concepts.

### Trail Network

- Develop a shared use trail signage plan.
- Perform a detailed trail-by-trail segment assessment of conditions and experience intent. *(beyond our current scope of work)*
- Make recommendations for realignments, drainage improvements, new segments, and closures.
- Identify Primary MTB trail alignments with preferred direction and signage.

### Bike - Optimized Facilities

- Create a plan that serves beginners, skills development, and engaging for intermediate/advanced riders. See following map graphic.

#### Skills Development *(light green zone)*

- Beginner loop or Bicycle Playground with low/wide rideable features
- Low-intermediate loop(s) with progressing rideable features.

#### Pumptrack set in natural setting. *(red zone)*

- Can be constructed out of dirt or asphalt.
- More of a linear pump trail than an enclosed pumptrack.

#### Pumptrack Options *(bright green zones)*

- Asphalt tot track and/or pumptrack with progression built into it.

### Flow and Jump *(blue zone)*

- Terrain and slopes are ideal for flow trail(s) development with optional lines and jump features.

### Technical Trails *(purple zone)*

- Terrain with slopes allow for short techy climbs and rough descents.
- Presence of existing rock, import more rock, for trail tread.
- Make better use of elevation changes than existing trails.

### "Shred Sidewalk"

- Similar to Bentonville's A-Street "Shred to School" trail.
- Crushed limestone or chip seal for durability and reduced maintenance.
- Wide with rollable and jump/tech features.
- "Sessionable" beginner flow lines and advanced bump and jump trails.

## Next Steps

- City/Client to provide initial feedback on these observations and recommendation.
- IMBA TS refines concept and writes draft concept plan document.
- City/Client reviews draft document.
- IMBA TS finalizes document for City to use as a framework for next steps in gaining support, funding, and discussions about phasing/implementation.

Evergreen Park Site Visit Memo – October 15, 2020



# Evergreen and Quarry Parks

Sheboygan, WI

## Legend

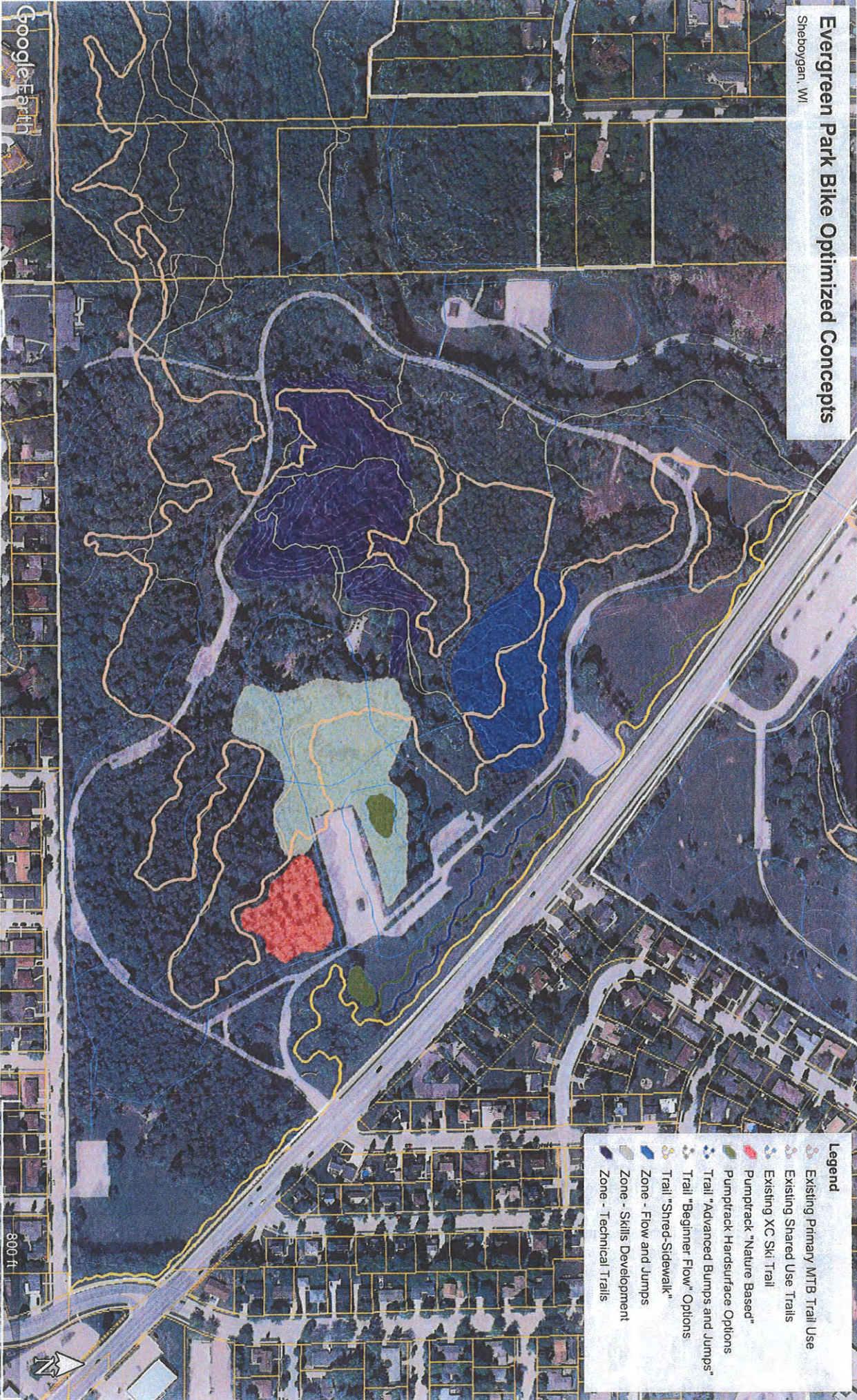
- Primary MTB Trail Use
- Shared Use Trails
- XC Ski Trails





# Evergreen Park Bike Optimized Concepts

Sheboygan, WI



- Legend**
- Existing Primary MTB Trail Use
  - Existing Shared Use Trails
  - Existing XC Ski Trail
  - Pumptrack "Nature Based"
  - Pumptrack Hardsurface Options
  - Trail "Advanced Bumps and Jumps"
  - Trail "Beginner Flow" Options
  - Trail "Shred-Sidewalk"
  - Zone - Flow and Jumps
  - Zone - Skills Development
  - Zone - Technical Trails

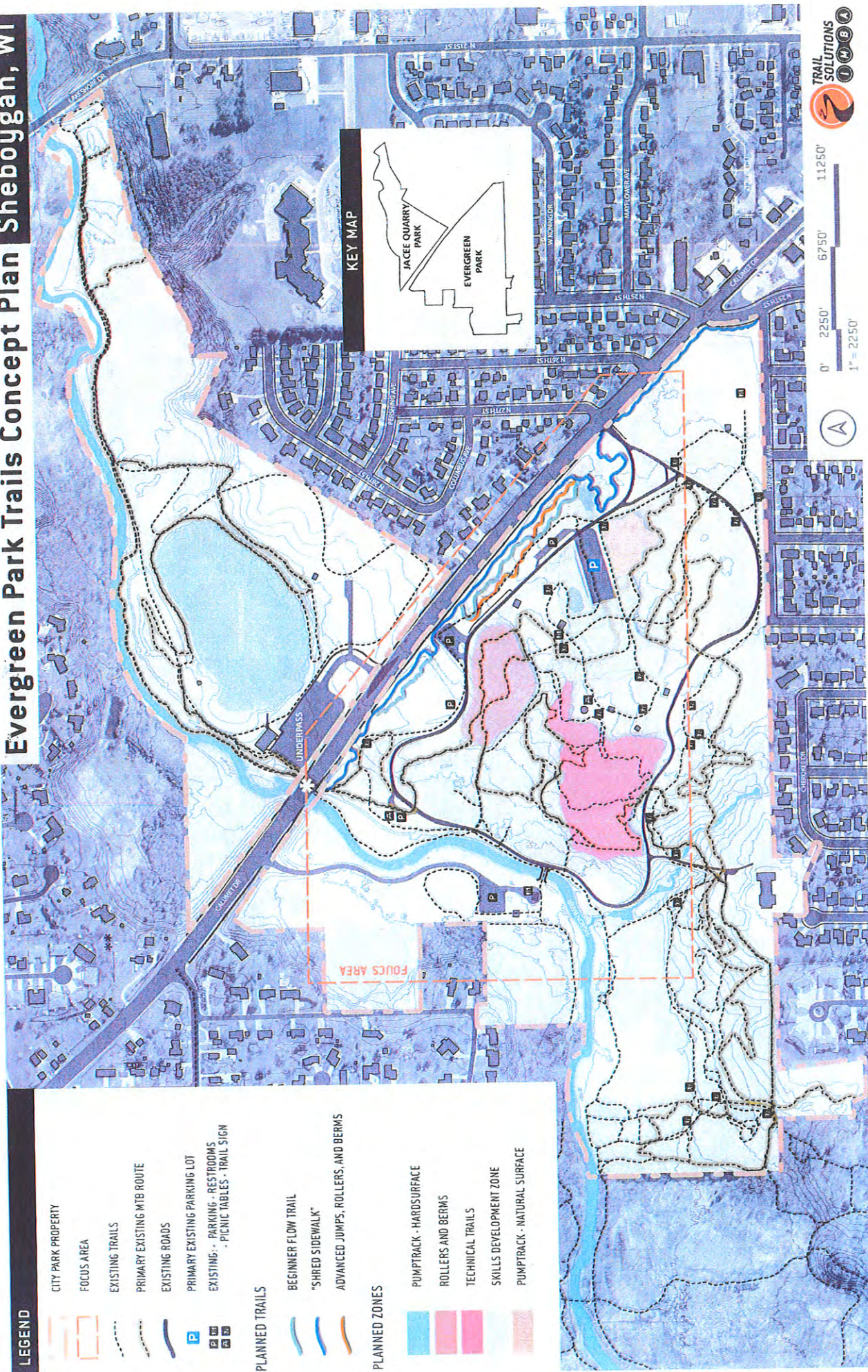
Google Earth

300 ft



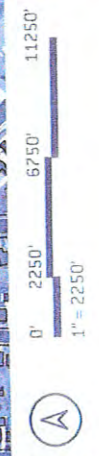
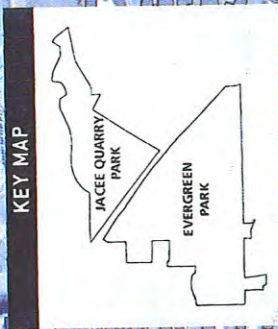


# Evergreen Park Trails Concept Plan Sheboygan, WI



## LEGEND

- CITY PARK PROPERTY
  - FOCUS AREA
  - EXISTING TRAILS
  - PRIMARY EXISTING MTB ROUTE
  - EXISTING ROADS
  - PRIMARY EXISTING PARKING LOT
  - EXISTING - PARKING - RESTROOMS
  - EXISTING - PICNIC TABLES - TRAIL SIGN
- 
- ### PLANNED TRAILS
- BEGINNER FLOW TRAIL
  - "SHRED SIDEWALK"
  - ADVANCED JUMPS, ROLLERS, AND BERMS
- 
- ### PLANNED ZONES
- PUMPTRACK - HARDSURFACE
  - ROLLERS AND BERMS
  - TECHNICAL TRAILS
  - SKILLS DEVELOPMENT ZONE
  - PUMPTRACK - NATURAL SURFACE







Joe Kerlin  
Superintendent of Parks and Forestry  
City of Sheboygan, WI – DPW  
2026 New Jersey Ave, Sheboygan, WI 53081

Via: [Joe.kerlin@sheboyganwi.gov](mailto:Joe.kerlin@sheboyganwi.gov)

February 28, 2022

Mr. Kerlin,

Thank you for the opportunity to submit the following proposal to complete a trails assessment and trail improvement planning exercise for Evergreen and Quarry Parks in Sheboygan, WI.

As the international leader in developing natural surface trails, IMBA Trail Solutions has partnered extensively with NGO's while working alongside state, county, and federal land management agencies, and has deep experience in ensuring trail projects meet our clients' goals. Our staff excels at planning, design, and construction of natural surface trail facilities and bike parks that provide unique and high-quality experiences for visitors of all ages and ability levels.

If you agree with the attached proposal, please sign, scan, and return it to me.  
Do not hesitate to contact me if you have any questions on the following scope of work and fee estimate.

Sincerely,

A handwritten signature in black ink that reads "MICHAEL D. REPYAK". The letters are in all caps and have a casual, slightly slanted appearance.

Michael Repyak, Trail Solutions Director of Planning and Design  
International Mountain Bicycling Association  
[Mike.Repyak@imba.com](mailto:Mike.Repyak@imba.com)



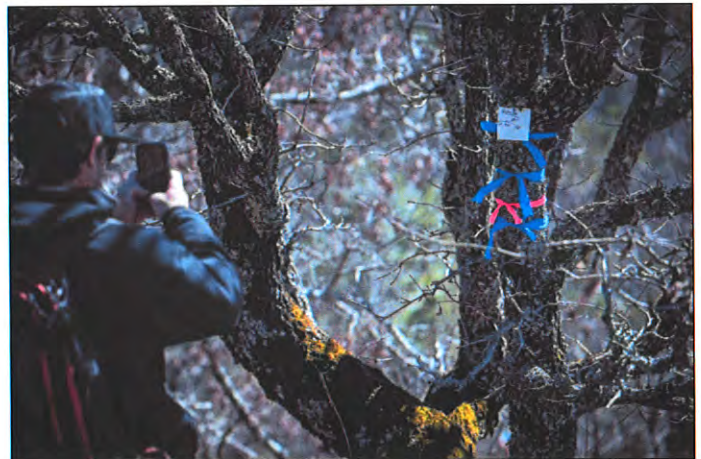


## Qualifications and Experience

IMBA Trail Solutions (TS) is the international leader in developing singletrack trails, with experience in over 750 projects in the North America, Europe, and Asia. Our staff excels at planning, design, and construction of trail systems that provide high-quality experiences for local riders and destination visitors while simultaneously minimizing environmental impacts.

TS is a fee-for-service based arm of the International Mountain Bicycling Association (IMBA), a 501(c)3 non-profit organization. IMBA's mission is to create, enhance, and protect great places to ride mountain bikes. TS employs approximately twenty professional trail planners and builders. In addition to being industry professionals and exceptional mountain bike riders, TS staff hold a broad base of applicable skills and knowledge from planning, landscape architecture, environmental sciences to GIS systems, AutoCAD, and graphic design.

Our wealth of experience has allowed us to develop the gold standard guidelines for creation of both sustainable and enjoyable singletrack trails. These guidelines have influenced all major federal land management agencies and many state and local parks departments. We pride ourselves on the positive experiences we have provided to the millions of active trail users around the world, and in the economic independence that communities have achieved through the development of destination trail systems.



*Evergreen Park and Quarry Park Trails Assessment and Improvement Planning – Sheboygan, WI*





# Project Approach

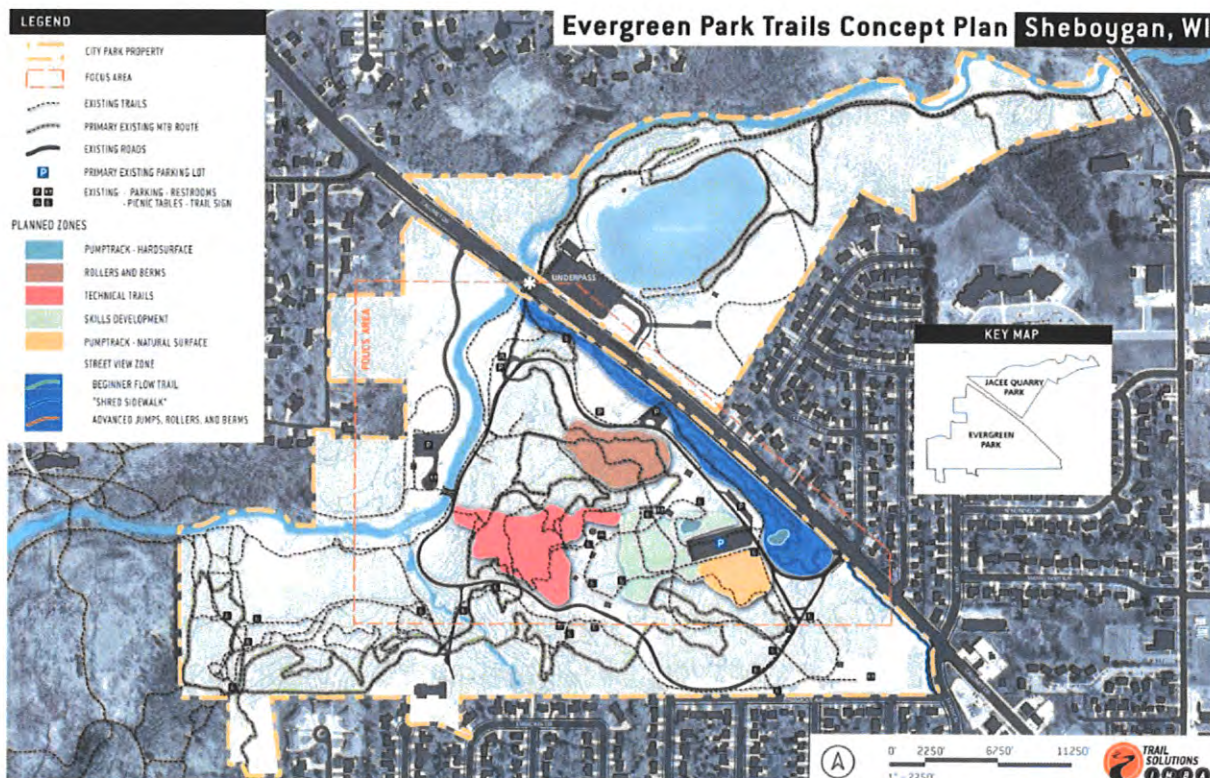
IMBA Trail Solutions (TS) proposes a collaborative process of assessment and planning. City of Sheboygan staff and appropriate stakeholders will be engaged and informed throughout the assessment and planning process. By doing so, all involved will have opportunities to review our assessment reporting, recommendations on trail improvements, comment on deliverables, and set the stage for future implementation of a successful project.

To kick off the project, TS will meet with City of Sheboygan staff and appropriate stakeholders to discuss the goals for improving trails, the range of users to plan for, the desired trail experiences to be offered, and the existing operations and management of the parks.

TS staff will then review the project area to inventory the landscape and existing trails. TS staff will review each trail, sanctioned and unsanctioned, by foot and bicycle to determine sustainability and appropriateness. Special attention is paid to natural resources, soil types, slopes, and the purpose of the trail within the larger system. This site visit will inform the tasks to complete a Trails Assessment Plan, considerations that will guide the next steps of detailed design and implementation.

Trail Solutions assessment and planning practices will set a framework that advises the eventual development of trail management objectives, recommended implementation methods, updated cost estimates and phasing recommendations. Those details can be used during subsequent steps in the design and implementation process.

The following Scope of Work and Fee Estimate outlines the proposed assessment and planning. Once these tasks are complete, Trail Solutions will have detailed information that will allow us to recommend an appropriate list of next steps.





# Scope of Work

## TASK 1 – Project Preparation

- Discuss project goals and objectives with City of Sheboygan staff and stakeholders.
- Ongoing project management and coordination via phone calls, emails, and video conferences as needed to ensure a successful project, budget, and timeline.
- Update current mapping data as needed.
- Update base map to be used for assessment, planning, and site visit. The map will be complete with area of interest, existing conditions (*roads, buildings, boundaries, land ownership, infrastructure, hydrology, vegetation*), topographic contour information, and orthophotography.

Deliverables – Project understanding, ongoing management, and updated base mapping

## TASK 2 – Assessment and Planning Fieldwork

- TS staff will travel to Sheboygan, WI.
- Review the project area, surrounding landscape, and existing trails. During the site visit special attention will be made to inventory and assess existing trails for sustainability, natural resource impacts, and experience goals. Focus on determining suitability of existing trails for the terrain, management goals, and trail system experiences. Areas will be observed and assessed for trail reroutes, improvements, or additions to meet the management and community goals.

Deliverables – Field assessment and observations, KML data

## TASK 3 – Client and Stakeholder Meetings

- Meet with City of Sheboygan staff and appropriate stakeholders to discuss existing property, project goals/objectives, important ecological areas, desired trail experiences, trail user demographics, and implementation strategies.
- Meet with local trail users to discuss their desires and experience objectives from the existing trail systems while informing them of the ongoing assessment and planning process.

Deliverables – Client and stakeholder feedback and support







## TASK 4 –Trails Assessment Deliverable

- The Trails Assessment Plan, to the extent possible based on the site visit, will recommend a variety of actions for the existing trail network. Trail improvements, relocations, and closures will be identified within the plan. The plan will outline a priority of implementation based upon management goals, financial burden, and timelines.
- A draft Trails Assessment Graphic showing all inventoried trails and their current status, as well as recommended actions, will be produced to help illustrate the Trails Assessment Plan.
- Upon review of the graphic, TS will compile a Trails Assessment Report detailing our field findings, assessment, and concept plan as shown in the graphic. The report will include sections on trail benefits, management goals, experience objectives, recommended trail actions, permitting considerations, implementation approach, phasing considerations, and preliminary development/construction cost opinion.
- TS will provide a draft graphic and report for review by City of Sheboygan staff and any appropriate stakeholders. One review is anticipated which will provide TS with succinct and concise comments and edits. Once all comments have been received, TS will edit and finalize the report.

## Deliverables – Trails Assessment Graphic and Report

### OPTIONAL TASK – Public Engagement

TS can create a project specific GIS Storymap that informs the public throughout the trails planning process and can be a portal to solicit public input.

- During Task 1, setup GIS Storymap with project narratives
- During Task 1, create a public engagement survey to gather input on existing trail experience and trail improvements, additions, share-use trails, single-use trails, etc.
- At the beginning of Task 2, review and report on engagement feedback to client and stakeholders
- Update Storymap with assessment findings and draft trails improvement plan graphic from Task 4.3
- Upon completion of Task 4.4, update Storymap with final assessment and trail improvement plan document.

### Example Storymap from the MadBAT feasibility and planning project in Madison, WI